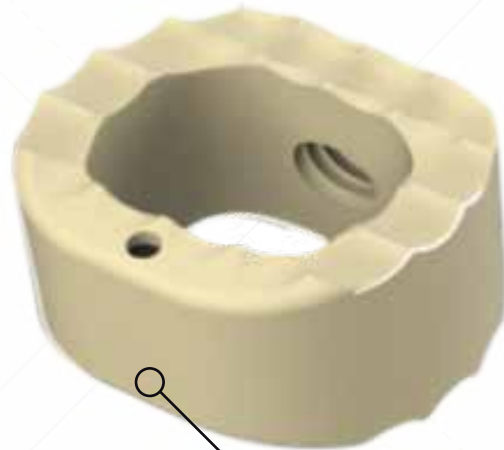




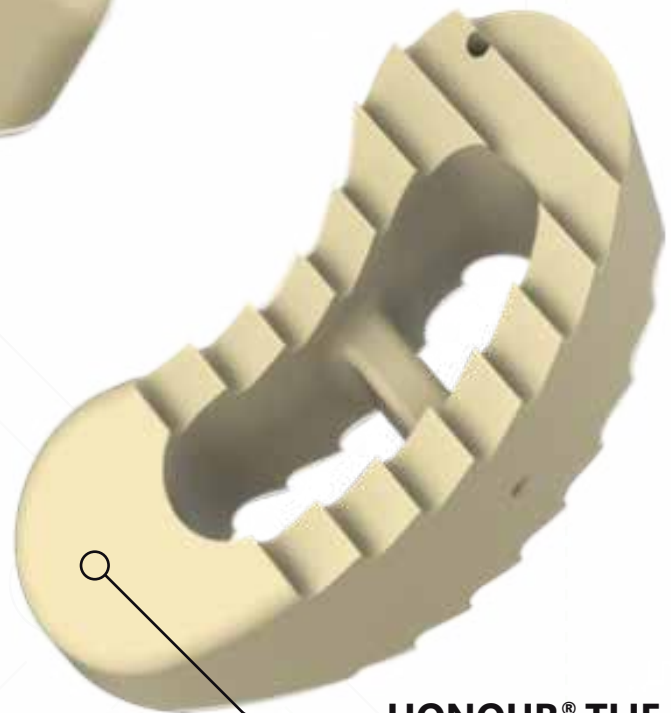
**HONOUR®**  
PEEK Implant System



**HONOUR® ORB**  
C2-T1



**HONOUR® tPLIF**  
L2-S1



**HONOUR® TLIF EZ**  
L2-S1

**NEXXT**  
Spine

317-436-7801  
INFO@NEXXTSPINE.COM  
14425 BERGEN BLVD, STE B  
NOBLESVILLE, IN 46060  
70-062E, Rev B



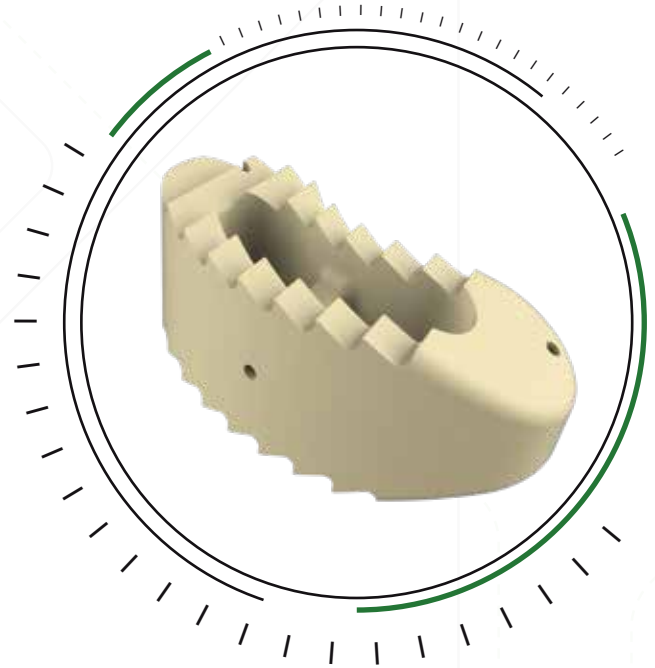
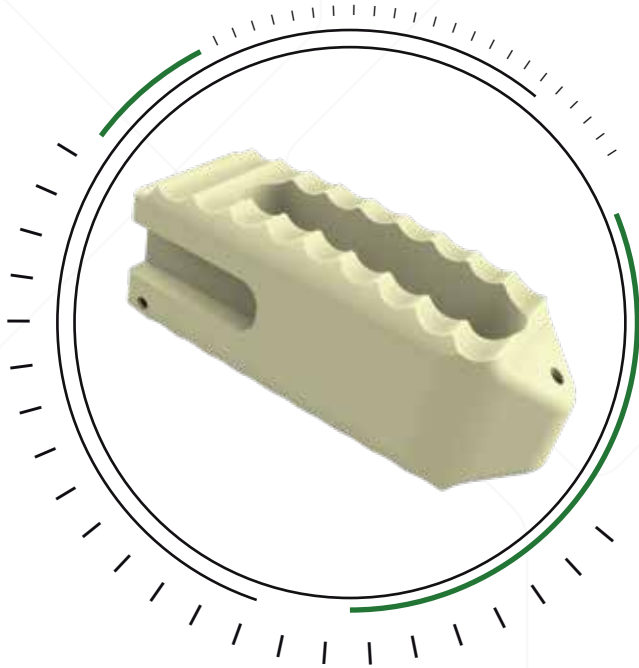
**tPLIF**

L2-S1



**TLIF**

L2-S1



**FOOTPRINTS:**

**22Lx9W, 26Lx9W, 28Lx10W  
30Lx10W, 32Lx10W, 34Lx10W**

**HEIGHTS:**

**7-14 // 15-17mm**

**STANDARD // OPTIONAL**

**FOOTPRINTS:**

**28Lx10W, 31Lx10W,  
34Lx10W**

**HEIGHTS:**

**7-13 // 14-17mm**

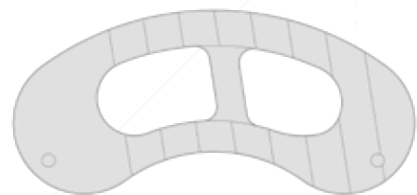
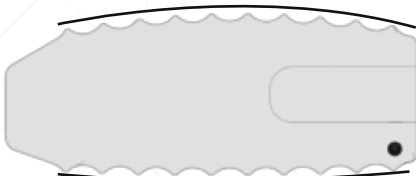
**LORDOSIS:**

**6°, 0°**

**STANDARD // OPTIONAL**



**Convex design allows  
better mating to end plates**



**Bullet tip for easy  
insertion**





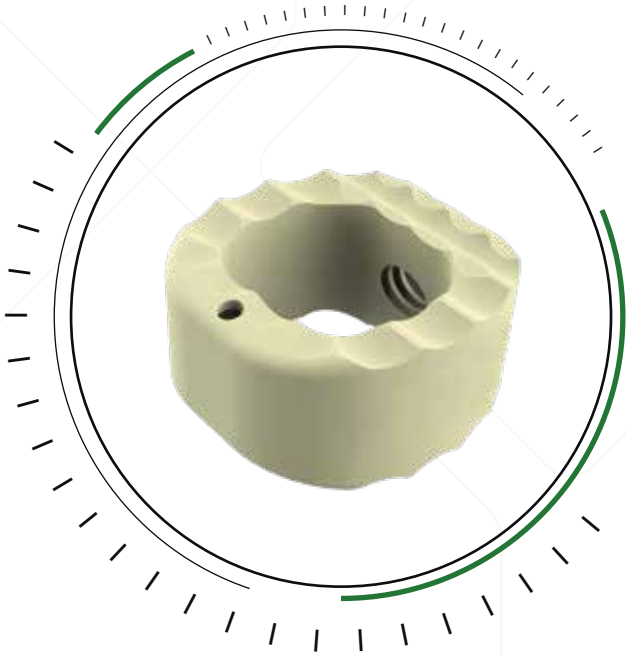
# CERVICAL

C2-T1



# INSTRUMENTS

Grow with us.



### FOOTPRINTS:

12x12, 12x14,  
14x16, 16x18mm

### HEIGHTS:

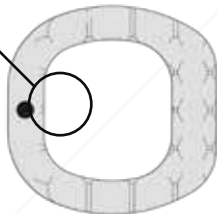
5-10 // 11-18mm

### LORDOSIS:

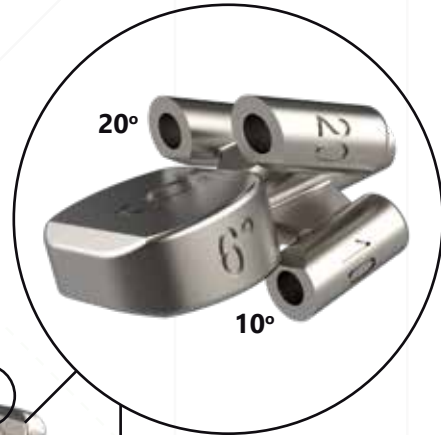
0°, 6°, 10°

STANDARD // OPTIONAL

Large graft window



Aggressive teeth resist migration



### TD Elite Trial Drill Guide

All in One: Trial, Drill Guide, and Plate Length Determination.

20°

10°

For use with Struxxure® or Blade® Anterior Cervical Plate System

