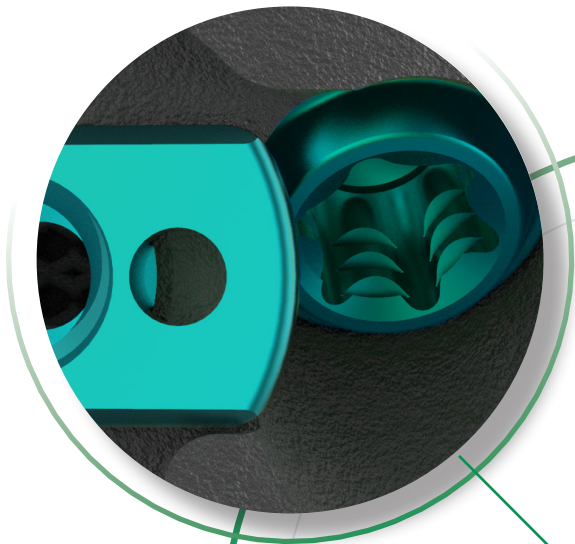
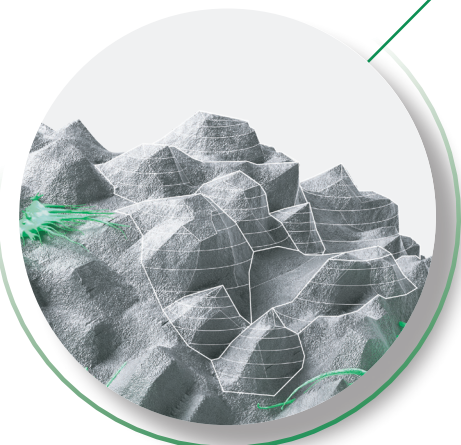
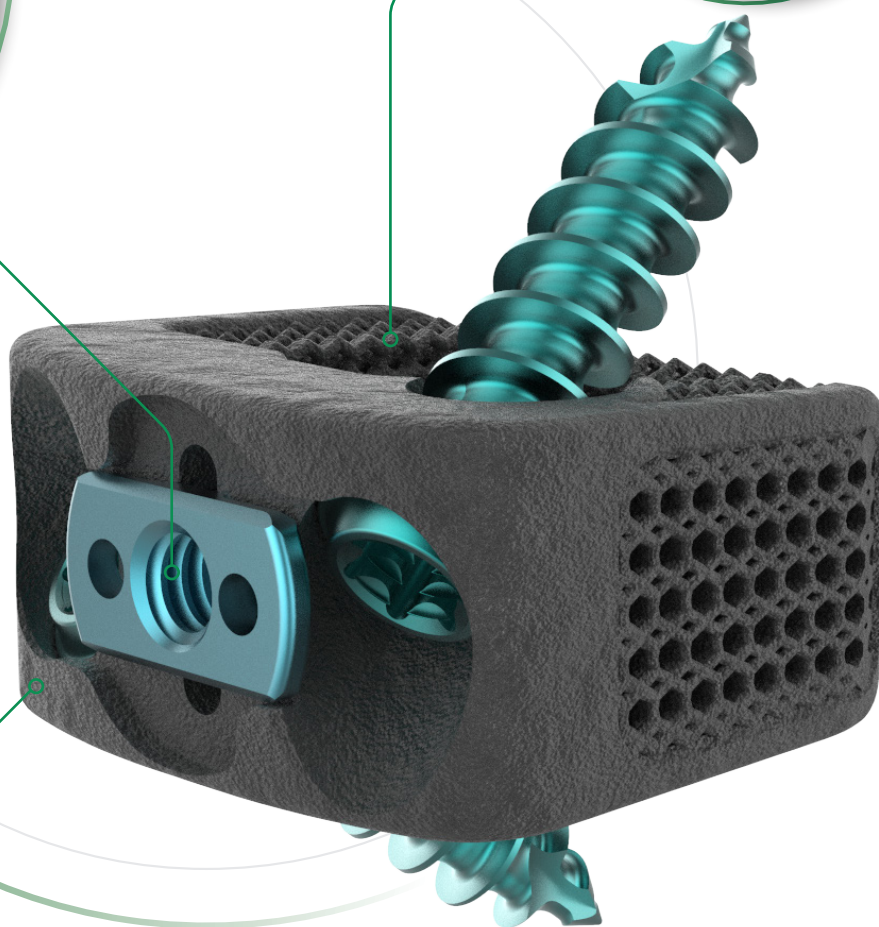
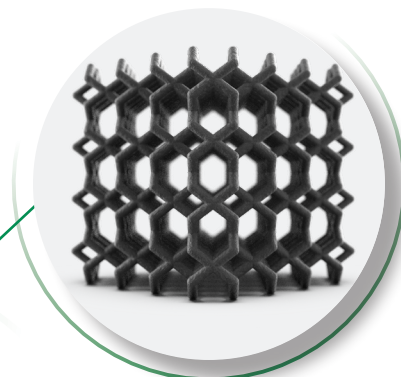


One-Step Turn Lock



Scaffold Architecture



Micro Roughened Topography

NEXXT
Spine



317-436-7801
Info@NexxtSpine.com
14425 Bergen Blvd, Suite B
Noblesville, IN 46060
70-075E, Rev C



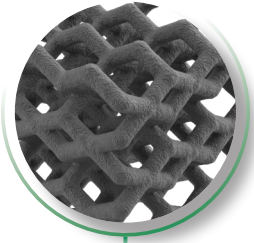
NEXXT MATRIXX®

3D Printed Porous Titanium

STAND ALONE CERVICAL

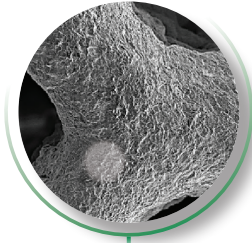
Simple, Integrated, Secure

10X



**Systematic Titanium
PORES**

300X



**Uncompromising
MACROSURFACE**

10,000X



**7µm Surface
MICROSURFACE**

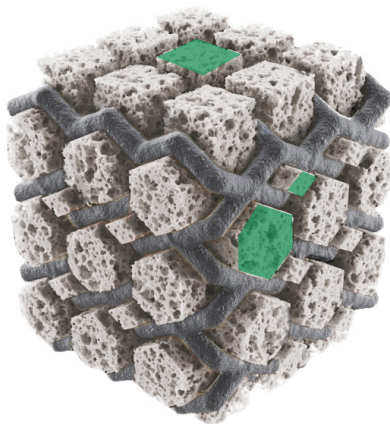
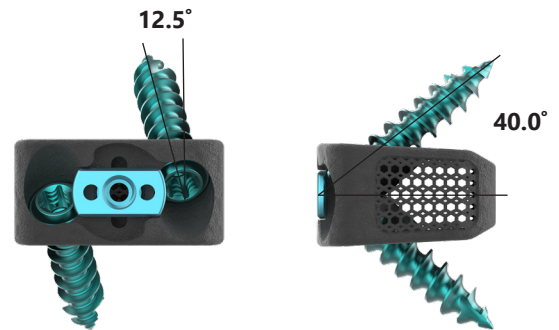
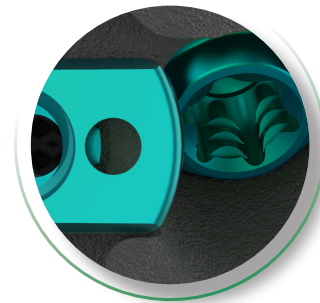


Image represents potential bony ingrowth



One-Step Turn Lock



TI PORES

- NEXXT MATRIXX® exhibits three pore sizes of 300, 500, and 700µm.
- Minimized titanium material resulting in a 75% open porous architecture.

SURFACE

- Nexxt Spine has developed a proprietary, residue-free, micro-roughening process that creates a highly cohesive 7µm roughened topography.
- Due to the micro-roughened porous structure of the NEXXT MATRIXX® titanium, the implants exhibit up to 4X more surface area for bone apposition and potential bony integration than conventional spinal implants.

IMPLANT OFFERINGS:

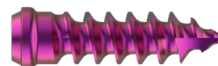
FOOTPRINTS:

12Dx15Wx5-10Hmm | 11+12mm
14Dx16Wx5-10Hmm | 11+12mm
16Dx18Wx5-12Hmm

LORDOSIS:

6°, 10°
6°, 10°
6°, 10°

Minimum height for 10° implants is 6mm



SCREWS:

Ø3.5x12, 14, and 16 | 18mm
Ø4.0x12, 14, and 16 | 18mm

Made to order



NEXXT MATRIXX®

3D Printed Porous Titanium

STAND ALONE CERVICAL

Simple, Integrated, Secure

3 SELF-GUIDED STYLES:

1. STRAIGHT

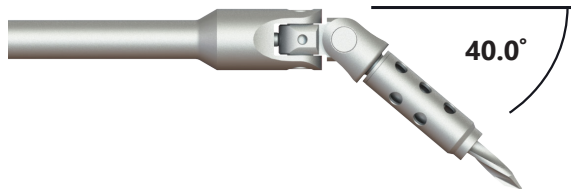
Awl • Drill • Hex Driver



LOCATE

2. POLY ANGLE: 360° RADIAL RANGE

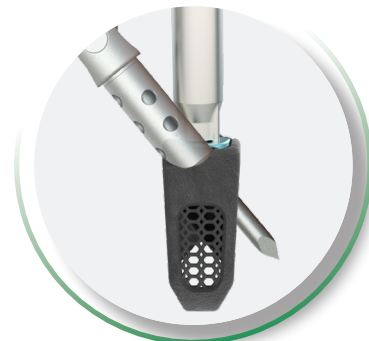
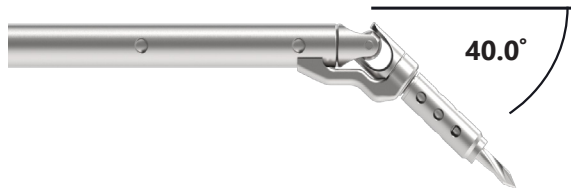
Awl • Drill • Hex Driver



DOCK

3. FIXED ANGLE

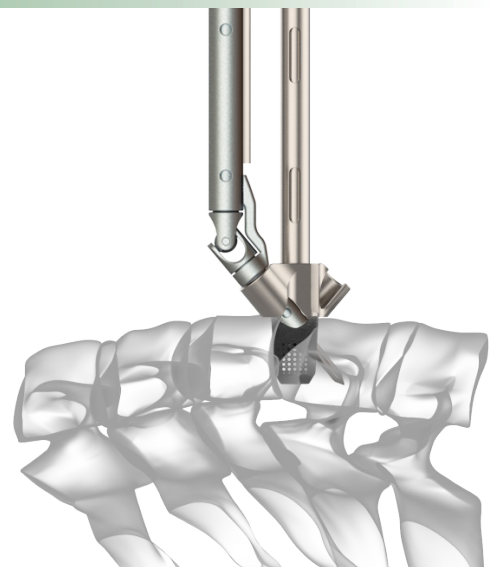
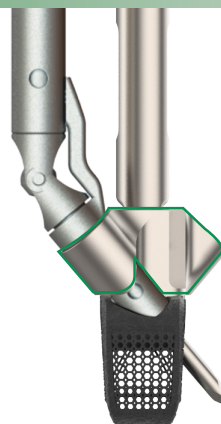
Awl • Drill • Hex Driver



PLUNGE

OPTIONAL INTEGRATED GUIDE HEAD

1. Insert Cage
2. Drill/Awl
3. Insert Screw
4. Remove Inserter





NEXXT MATRIXX®

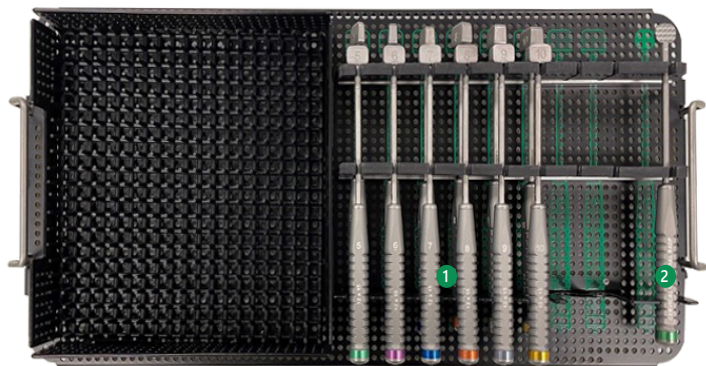
3D Printed Porous Titanium

STAND ALONE CERVICAL

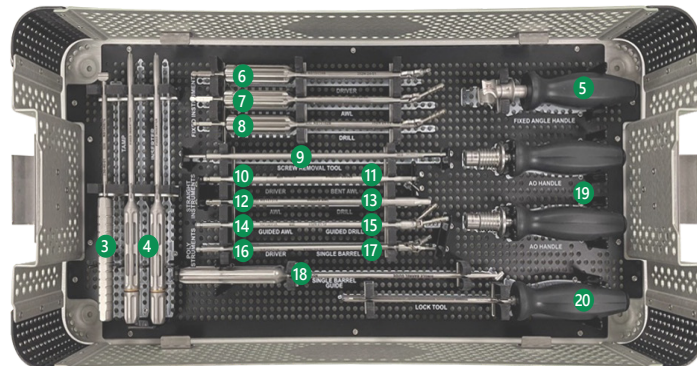
Simple, Integrated, Secure

NEXXT MATRIXX® Stand Alone Cervical - Standard Instrument Tray Layout

Top Level



Bottom Level



Standard Parts Included

1. Trials, 6°, 12 x 15 x 5:10mm tall (TOP)	11. Angle Awl
Trials, 6°, 14 x 16 x 5:10mm tall (BOTTOM)	12. Straight Guided Awl
2. Cervical Universal Rasp	13. Straight Guided Drill
3. Cervical, Tamp	14. Poly Guided Awl
4. Fixed Interbody Inserters (x2)	15. Poly Guided Drill
5. Fixed Angle Driver, Handle Assembly	16. Poly Driver
6. Fixed Angle Driver	17. Single Barrel Poly Awl
7. Fixed Angle Awl	18. Single Barrel Guide
8. Fixed Angle Drill	19. Fixed AO Handle (x2)
9. Screw Removal, Threaded Shaft	20. Lock Tool
10. Straight Driver	

NEXXT
Spine
GROW WITH US

Nexxt Spine, LLC
14425 Bergen Blvd, Suite B
Noblesville, IN 46060
(317) 436-7801
Info@NexxtSpine.com
NexxtSpine.com



For indications, contraindications, warnings, precautions, potential adverse effects and patient counseling information, see the package insert or contact your local representative; visit NexxtSpine.com for additional product information.

All rights reserved. All content herein is protected by copyright, trademarks and other intellectual property rights owned by Nexxt Spine, LLC and must not be redistributed, duplicated or disclosed, in whole or in part without the expressed written consent of Nexxt Spine, LLC. This material is intended for health care professionals, the Nexxt Spine sales force and authorized representatives. Distribution to any other recipient is prohibited.